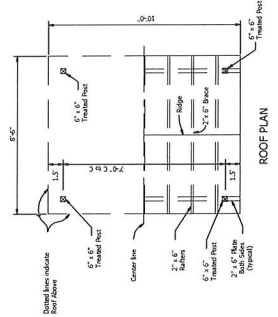
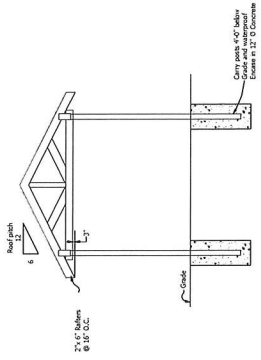


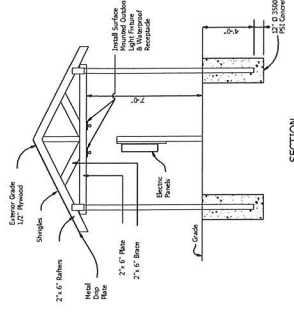
FRONT ELEVATION



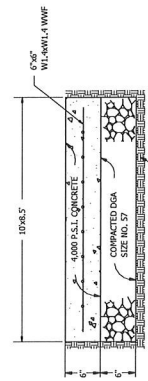
ROOF PLAN



SIDE ELEVATION



SECTION

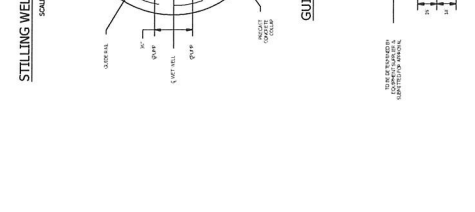
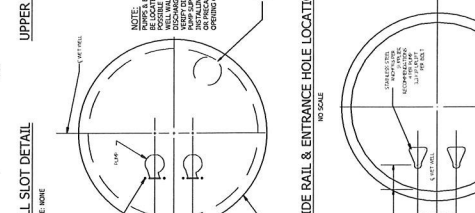
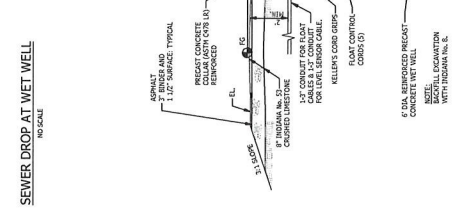
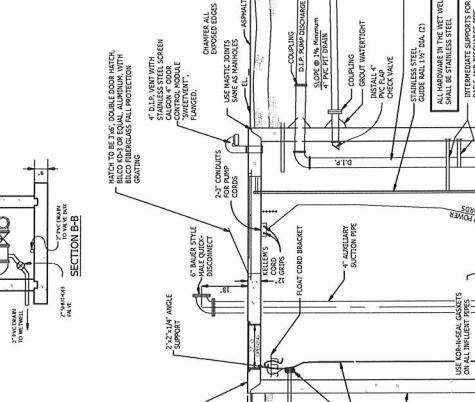
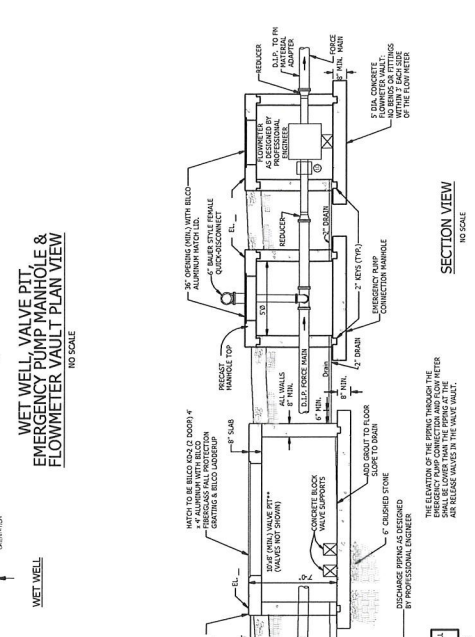
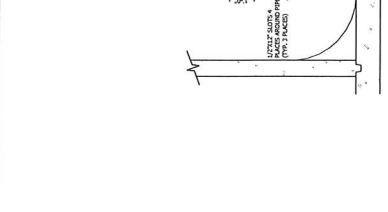
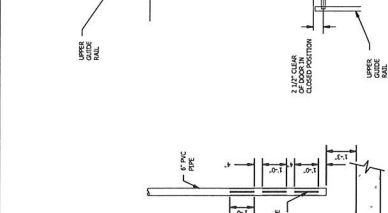
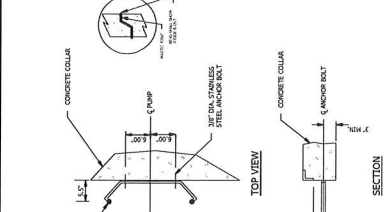
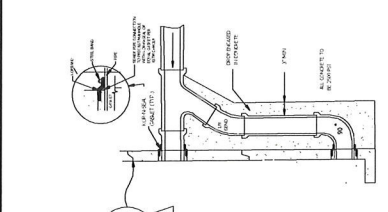
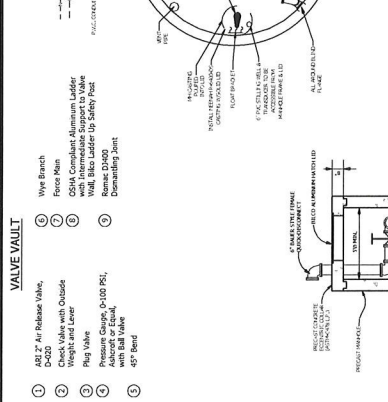
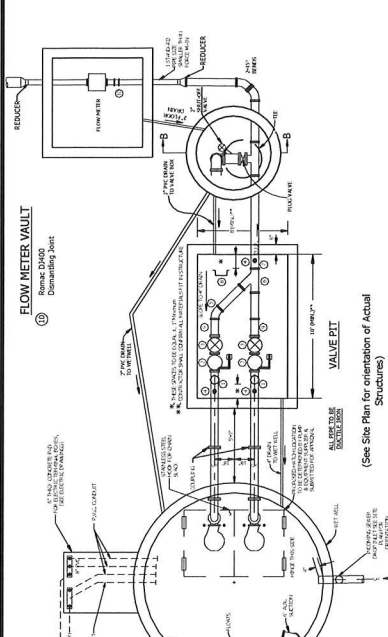


CONCRETE PAD SECTION  
NO SCALE

NOTE: REFER TO THE CONSTRUCTION STANDARDS FOR ADDITIONAL SPECIFICATIONS AND DETAILS

SANITARY SEWER STANDARD DETAILS  
CITY OF JEFFERSONVILLE  
JEFFERSONVILLE, INDIANA  
ELECTRICAL CONTROL CABINET AND ENCLOSURE DETAILS

10/02/2025	L. DZS Update of SANITARY SEWER & Details	Vertical Scale:	NOTED
		Horizontal Scale:	NOTED
		Date:	1/20/2025



**NOTES:**

- ALL BACKFILL FOR WET WELLS & VALVE PTI SHALL BE INDOY #8 STONE TO A POINT 2 FEET BELOW FINISHED GRADE.
- CONFIRM ALL DIMENSIONS WITH PUMP SUPPLIER PRIOR TO START OF CONSTRUCTION.
- ALL DIMENSIONS OF THE WALLS OF THE WET WELL, VALVE VAULT AND EMERGENCY CONNECTIONS SHALL BE GRADED WATER-TIGHT WITH NON-SHRINKING GROUT.
- ALL ABOVE-GROUND LEADERS AND PIPING SHALL BE PAINTED SAFETY.
- FLOOR CABLES ARE NOT TO BLOCK OPENING OF WETWELL.
- FRAMES IN WET CONTROL WALL IF THE WETWELL HAS TRANSDUCER FLOOR CONTROL ARE A STANDING SYSTEM, SEE ELECTRICAL DRAWINGS FOR DETAILS.
- ALL WETWELL MANHOLES SHALL BE 48\"/>

**REVISIONS:**

REVISION	DATE	DESCRIPTION
1	1/20/2025	ISSUE OF PUMP STATION & DETAILS

**NOTE:** REFER TO THE CONSTRUCTION STANDARDS FOR ADDITIONAL SPECIFICATIONS AND DETAILS

**NOTE:** REFER TO THE CONSTRUCTION STANDARDS FOR ADDITIONAL SPECIFICATIONS AND DETAILS

**NOTE:** REFER TO THE CONSTRUCTION STANDARDS FOR ADDITIONAL SPECIFICATIONS AND DETAILS

**NOTE:** REFER TO THE CONSTRUCTION STANDARDS FOR ADDITIONAL SPECIFICATIONS AND DETAILS

**NOTE:** REFER TO THE CONSTRUCTION STANDARDS FOR ADDITIONAL SPECIFICATIONS AND DETAILS

Vertical Scale:	NOTED
Horizontal Scale:	NOTED
Date:	1/20/2025

**JEFFERSONVILLE INDIANA**

**SANITARY SEWER STANDARD DETAILS**  
**CITY OF JEFFERSONVILLE**  
**JEFFERSONVILLE, INDIANA**

**PUMP STATION DETAILS**

