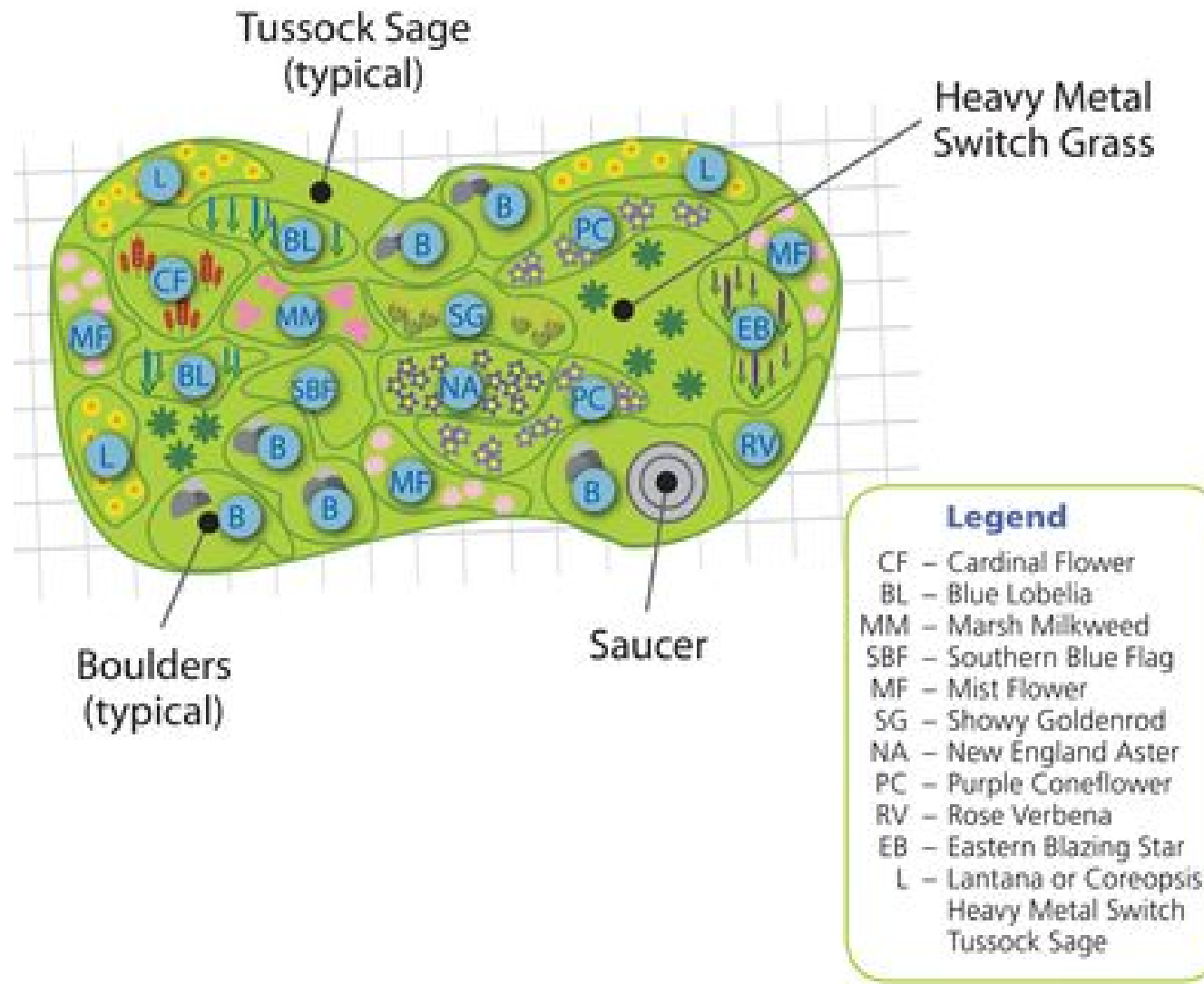


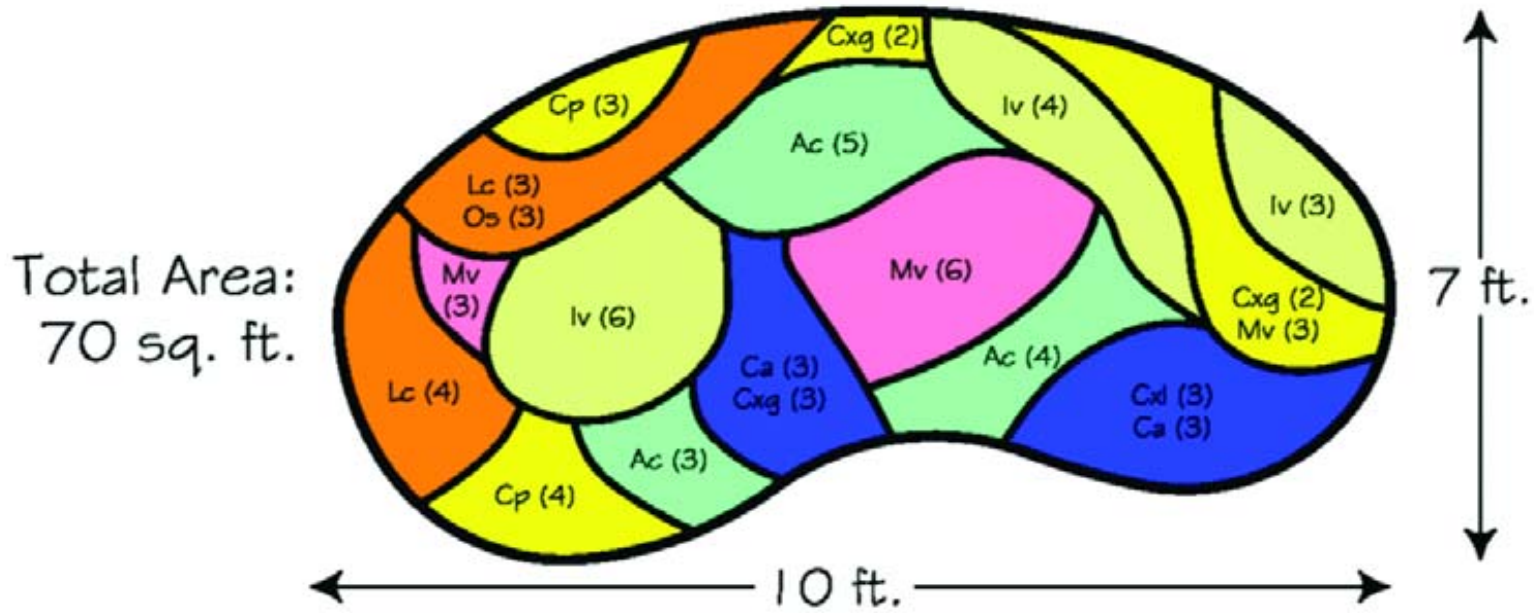
# APPENDIX B: SAMPLE GARDEN LAYOUTS

## Sunny Rain Garden

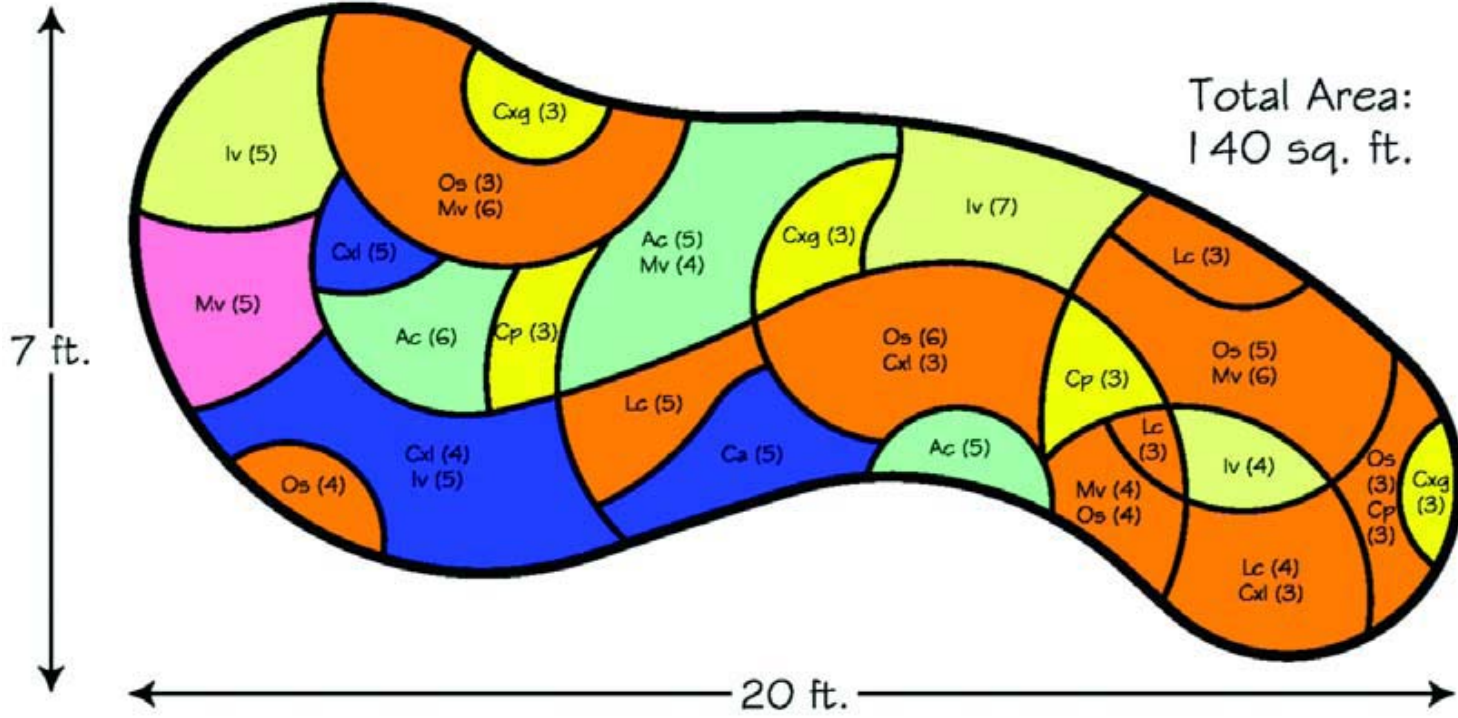


# Butterfly Rain Garden

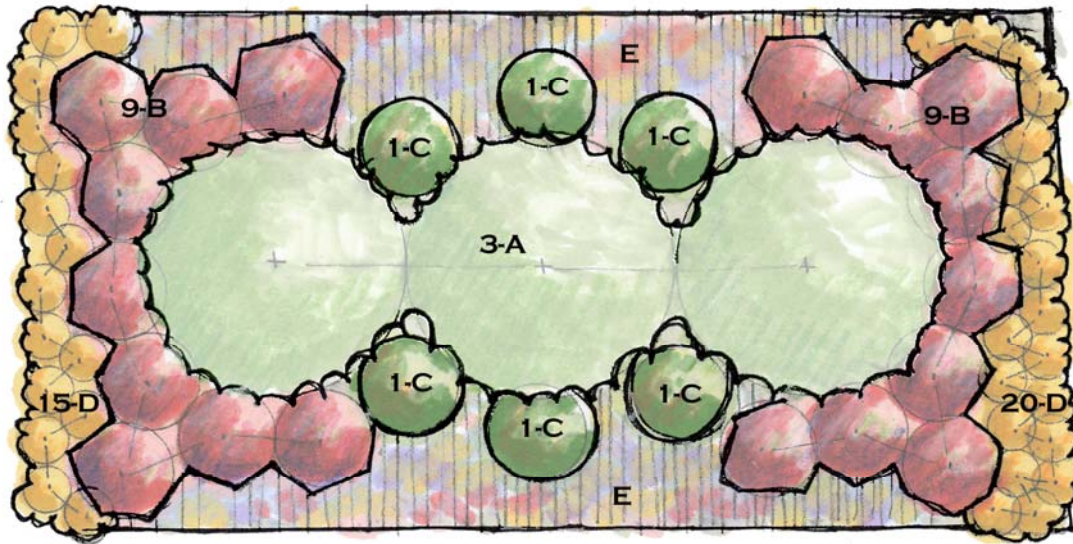




Symbol	Species Name	Common Name	No. of Plants
Ac	<i>Acorus calamus</i>	Sweet flag	12
Ca	<i>Campanula americana</i>	Tall bellflower	6
Cp	<i>Caltha palustris</i>	Marsh marigold	7
Cxg	<i>Carex Grayii</i>	Bur sedge	7
Cxl	<i>Carex lupulina</i>	Hop sedge	3
Iv	<i>Iris virginica-shrevei</i>	Wild blue flag iris	13
Lc	<i>Lobelia cardinalis</i>	Cardinal flower	7
Mv	<i>Mertensia virginica</i>	Virginia bluebells	12
Os	<i>Onoclea sensibilis</i>	Sensitive fern	3
Total Plants Needed			70



Symbol	Species Name	Common Name	No. of Plants
Ac	<i>Acorus calamus</i>	Sweet flag	16
Cp	<i>Caltha palustris</i>	Marsh marigold	9
Ca	<i>Campanula americana</i>	Tall bellflower	5
Cxg	<i>Carex Grayii</i>	Bur sedge	9
Cxl	<i>Carex lupulina</i>	Hop sedge	15
Iv	<i>Iris virginica-shrevei</i>	Wild blue flag iris	21
Lc	<i>Lobelia cardinalis</i>	Cardinal flower	15
Mv	<i>Mertensia virginica</i>	Virginia bluebells	25
Os	<i>Onoclea sensibilis</i>	Sensitive fern	25
Total Plants Needed			140



- A - *Ilex opaca* (American Holly), 8' o.c.
- B - *Vaccinium corymbosum* (Highbush Blueberry), 3' o.c.
- C - *Rhododendron viscosum* (Swamp Azalea), or *Cornus sericea* (Redosier Dogwood), or *Ilex glabra nana* (Dwarf Inkberry)
- D - *Hemerocallis hybrids* (Hybrid daylilies e.g. 'Happy Returns'), 12" o.c. or *Phlox subulata* (Thrift), 12" o.c.
- E - Wildflower Mix, 85 SF; sample mix:
  - 50% *Rudbeckia hirta* (Black-Eyed Susan)
  - 20% *Echinacea purpurea* (Purple Coneflower),
  - 20% *Liatrus spicata* (Blazing-Star),
  - 10% *Asclepias tuberosa* (Butterfly Weed)

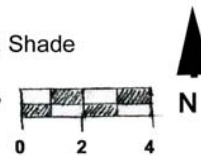
If using plants (vs. seed) for wildflowers, space 18" o.c. (19 -*Rudbeckia*, 8 - *Echinacea*, 8- *Liatrus*, 4 - *Asclepias*) <seeding is lower cost but higher maintenance option due to need for nurturing seedlings>  
 note: o.c. = on center

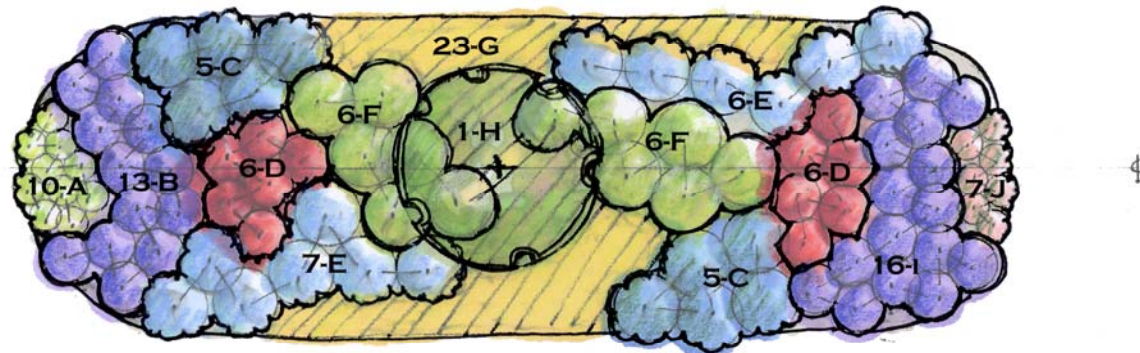


**FOR THE BIRDS RAINGARDEN  
450 SF**

Full Sun-Pt. Shade  
All zones

Scale: 1/4"=1'





- A - *Eupatorium perfoliatum* (Common Boneset), 12" o.c.
- B - *Pennstemon laevigatus* (Eastern Smooth Beardstongue)\*, 18" o.c.
- C - *Lobelia siphilitica* (Great Blue Lobelia), 2' o.c.
- D - *Lobelia cardinalis* (Cardinal Flower), 18" o.c.
- E - *Tradescantia virginiana* (Spiderwort), 2' o.c.
- F - *Veronicastrum virginicum* (Culver's Root), 2' o.c.
- G - *Osmunda cinnamomea* (Cinnamon Fern), 18" o.c.
- H - *Amelanchier arborea* (Downy Serviceberry) or *Hamamelis virginiana* (Witchhazel) (partial sun)
- I - *Astilbe 'Rheinland'* (Perennial Spirea, Pink Astilbe), 18" o.c.
- J - *Aquilegia canadensis* (Columbine), 12" o.c.

note: o.c. = on center

\* Hardy up through Pennsylvania; if colder than 5b, then substitute *Heuchera americana* (Alumroot)



**BUTTERFLIES SWALE RAINGARDEN**  
 250 SF  
 Pt Shade/Shade  
 Piedmont

Scale: 1/4"=1'

